



One stop scaffolding solution.

# COMPANY PROFILE

Scaffolding solutions that are synonymous with quality, integrity and above all safety.



## Company Details

XTREME SCAFFOLDING  
admin@scaf.co.za

All rights reserved. 2018 -2019  
Company Profile of Xtreme Scaffolding

## ABOUT US

# WE PRIDE OURSELVES ON:

- FREE estimates without obligation
- Highly competitive market related quotations
- Excellent levels of customer service
- Completing projects within clients' schedule
- Cost effective scaffold designs
- High quality of safety.
- Implementation of highly complex solutions that are far beyond your average standard.
- Fully trained certified qualified scaffolders
- Complying with OHSACT & SANS required safety standards



### RIAAN VAN JAARVELD

Founder

riaan@scaf.co.za

riaan@pmbcaff.co.za

At the beginning of 2010 Riaan decided, that he really liked this industry and after 18 years has gained sufficient experience to venture out on his own. He started PMB Scaff & Services in Kwazulu Natal in June 2010 and registered the company in 2011.

The business grew from strength to strength. At the end of 2014 Riaan registered Xtreme Scaffolding in Port Elizabeth. We now added a depot in East London.

## WHY US

# WE SUPPLY, ERECT, DISMANTLE SCAFFOLDING

We have immediate access to 500T of kwikstage access scaffolding and have been able to build a strong supplier relationship that enables us to have sufficient access to enough scaffolding should a project call for it.

Currently we employ an average of 80 people of which 90% are skilled fixers, chargehands, foreman, supervisors and senior supervisors. We constantly provide training and work hand in hand with a **SITA register OHSACT training entity. (Also SANS)**

Training are based on an in-house assessment and are done on an ongoing basis.

Our team leaders & operations crew are all qualified to inspect and certify scaffolding. We supply site specific safety files both in hardcopy and a greener version in pdf.

We are a CIDB (Construction Industry Development Board) graded company . Our company is verified by the national treasury database.

### THE VARIOUS TRAINING CRITERIA COVERED ON AN ANNUAL BASIS WOULD CONSIST OF THE FOLLOWING:

- Working at heights
- Scaffold inspector training
- Scaffold erectors
- Harness inspector
- PPE inspector
- Accredited facilitator
- Confined space training
- First aid
- Advanced rescue training
- Toolbox talks

### ANNUAL MEDICALS FOR ALL EMPLOYEES ARE COMPULSORY. MEDICAL INCLUDE:

- Lungs – check for abnormalities or disease
- Eye – full eye test to determine range & disability
- Heart – check blood pressure and irregularities (heart palpitation)
- Drug and alcohol testing
- Height and confined space testing

### POLICE CLEARANCE

Each employee is required to undergo police clearance.

# OUR PROJECTS



## STORAGE TANKS AT BP

### CLIENT REQUIREMENT

Safe access as sand blasting and painting of this structure was the main goal

### SCAFFOLDING SUPPLIED

**Outside** - Independent Scaffolding with access staircase + 5 working platforms

**Inside** - Independent scaffold with supporting birdcage

### TOTAL EQUIPMENT USAGE | 75 tons total

40 tons for the outside independent scaffold, 35 tons for the inside birdcage scaffold

### SAFETY CHALLENGE | Narrow workspace, narrow entry and exit

Strict confined space entry safety regulations were followed while completing this project

### TIME FRAME | 2 Weeks

2 teams consisting of 5 per crew including a supervisor with CAW (issuing of permits) training.

## ST. MARY'S CATHOLIC CHURCH

### CLIENT REQUIREMENT

Support & safe access to clean and repair the outside walls and roof of this 90-year-old historic St Mary's Catholic Church as part of their 30-year refurbishment plan

### SCAFFOLDING SUPPLIED

**Outside** - 30 meter high Independent Scaffold, with access staircase, cantilevers over the roof & 9 working platforms.

**Inside** - Birdcage scaffold

### TOTAL EQUIPMENT USAGE | 35 tons total

30 tons for the outside independent scaffold, 5 tons for the inside birdcage scaffold

### PROJECT CHALLENGE

Client required access to the steeple, no weight was allowed on the roof, no tie ins allowed into the historical building. The scaffold was designed with cantilevers over the roof supported by the Independent scaffold in order to transfer the weight to the independent scaffolds

### TIME FRAME | 3 Weeks

2 teams consisting of 5 per crew including a supervisor with CAW (issuing of permits) training.



## TRANSNET SHIPYARD

### CLIENT REQUIREMENT

Access; to clean, sandblast, repair and paint the ship.

### SCAFFOLDING SUPPLIED

**Outside** - Independent Scaffold, with 2 x access staircases and 2 x working platforms.

### TOTAL EQUIPMENT USAGE

8 tons of scaffolding material in total

### SAFETY CHALLENGE | Client required access to the sides of the ship to sandblast and paint

Hightide had to be taken into account at the stern, thus scaffold was only erected and inspected during low tide, limiting the timeframe allowed for this project. The scaffold was also tied into the drydock track to secure

### TIME FRAME | 4 Days

1 team consisting of 5 per crew including a supervisor with CAW (issuing of permits) training.





## TRANSNET GAUTENG TRAIN BRIDGES

### CLIENT REQUIREMENT

Safe access, to sandblast, repair and paint the train bridge.

### SCAFFOLDING SUPPLIED

Hang Scaffold with 1 platform and 2 access staircases, with enough space to allow the Transnet team to work ergonomically.

### TOTAL EQUIPMENT USAGE

40 tons of scaffolding material in total.

### PROJECT CHALLENGE

Client required access to the sides and underneath the bridge to sandblast repair and paint the bridge. The project required a hang scaffold to be erected within a time frame over a river, with trains that still must operate on schedule. These challenges were overcome by obtaining a train route schedule from Transnet. A dedicated safety team that monitored the tracks was also supplied. A specialized fall protection plan was put into place that included the water factor and life jackets + a boat with an engine that was manned when our teams was on the scaffold.

### TIME FRAME | 16 weeks from site establishment to dismantling and removal of scaffolding.

3 days per span (erecting & dismantling)

2 teams consisting of 5 per crew + 2 supervisors with CAW (issuing of permits) training.

## OTHER SERVICES

## WE ALSO SUPPLY



Before



After

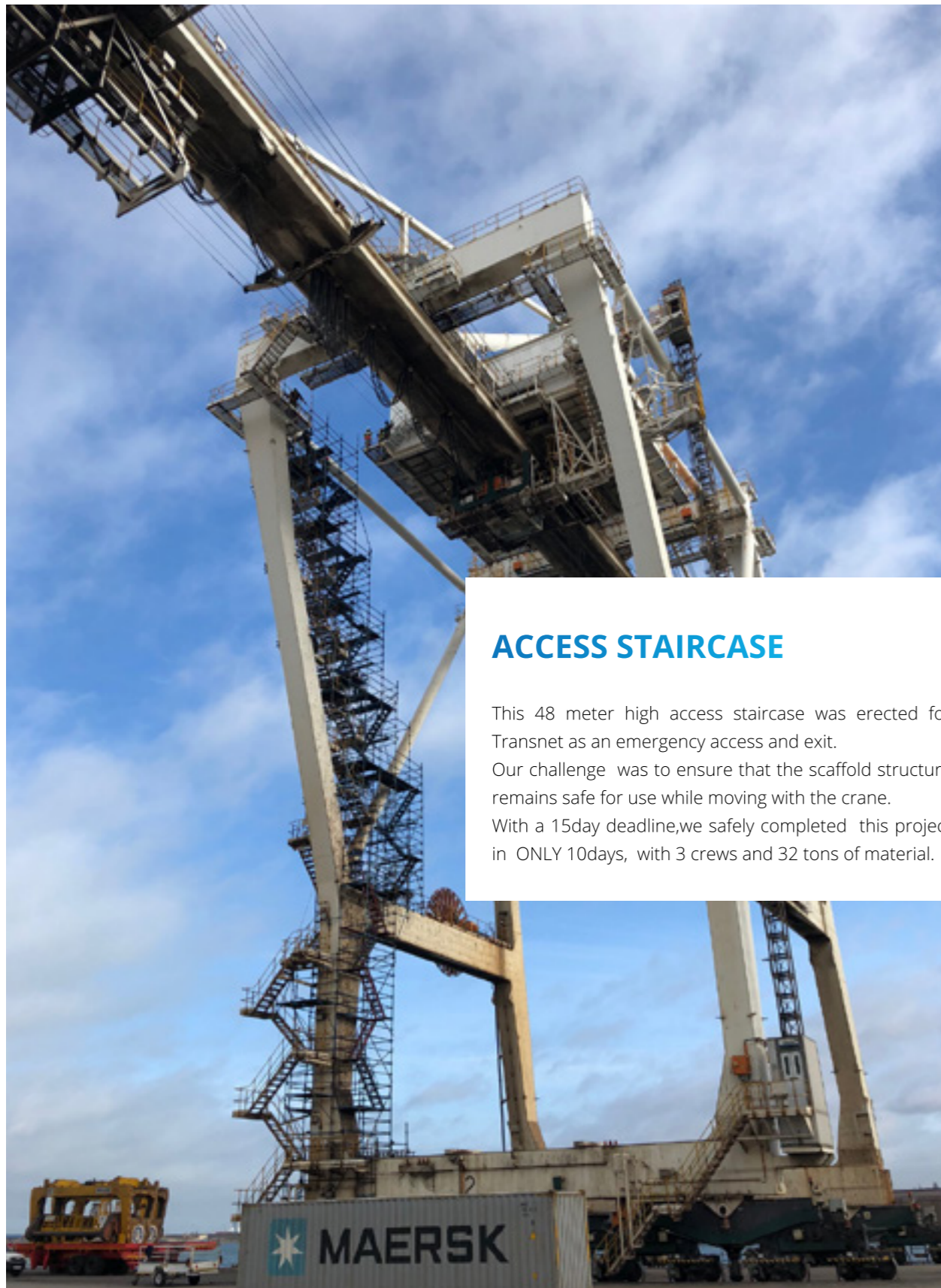
## STAGING

SABC deck supplied at the annual Nelson Mandela Marathon in Howick KZN since the start of this highlight on the KZN events calendar

## ENTERTAINMENT SCAFFOLDING

Supplied at the National Life savers competition in Port Elizabeth, constructed with the intense wind conditions of the friendly city in mind.





## ACCESS STAIRCASE

This 48 meter high access staircase was erected for Transnet as an emergency access and exit. Our challenge was to ensure that the scaffold structure remains safe for use while moving with the crane. With a 15day deadline, we safely completed this project in ONLY 10days, with 3 crews and 32 tons of material.



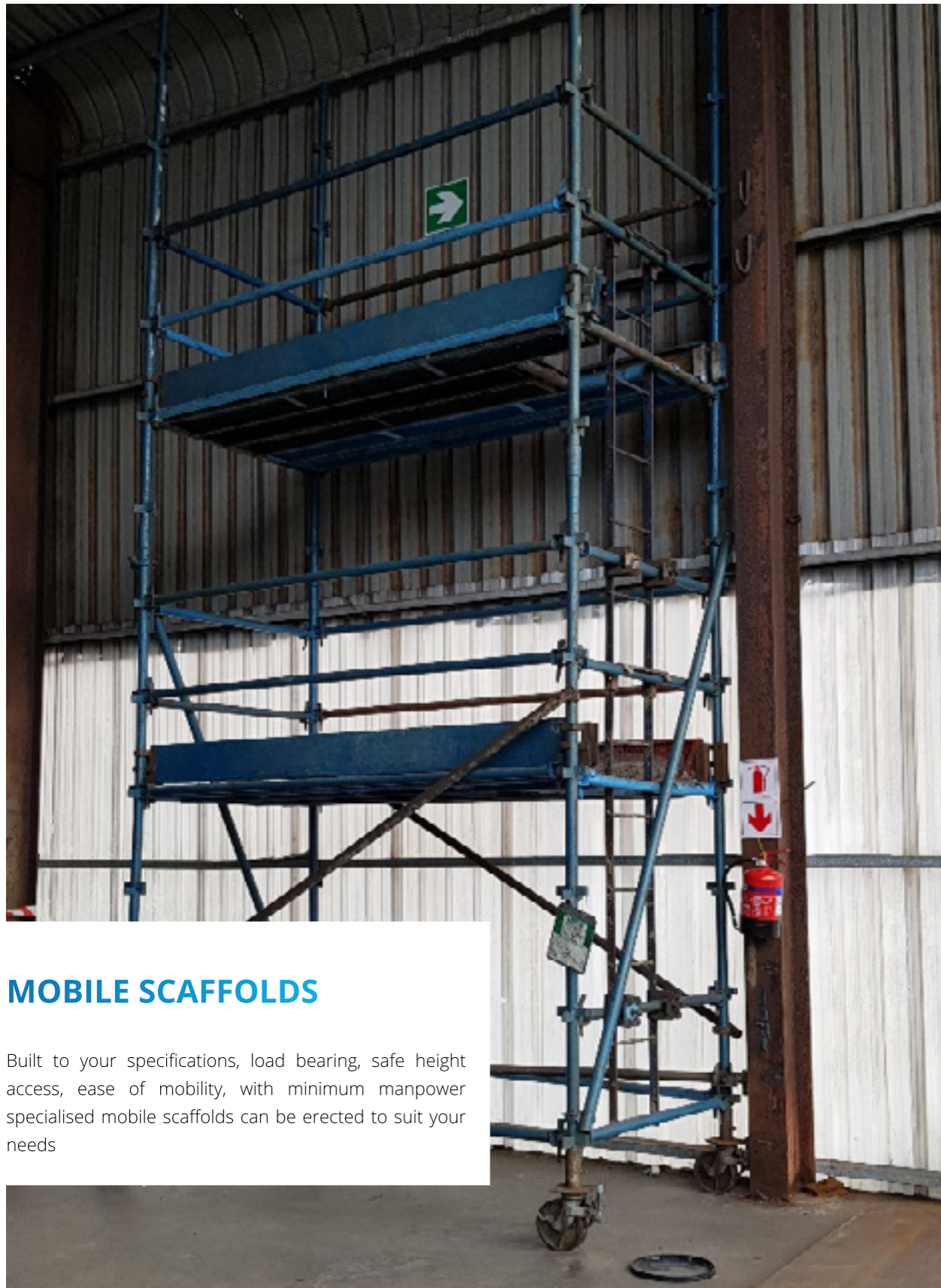
## HANGING SCAFFOLDS

Allows access to difficult to reach areas



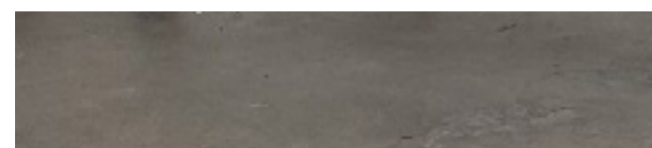
## SEATING STAND

Erected at the Nelson Mandela Day Marathon in Howick KZN, 300 seater, all our entertainment scaffolds are certified by an independent qualified structural engineer.



## MOBILE SCAFFOLDS

Built to your specifications, load bearing, safe height access, ease of mobility, with minimum manpower specialised mobile scaffolds can be erected to suit your needs



## POLICIES

# ENVIRONMENTAL POLICY

Fortunately, scaffolding does not pose a direct environmental threat, however, we at Xtreme Scaffolding pride ourselves in maintaining a clean working environment.

Housekeeping is something we pride ourselves in, all defective material picked are removed and repaired/replace.

We fully comply with the OHS Act. We have a vehicle fleet that are inspected daily and logged accordingly.

Having a Branch in Kwazulu Natal and Eastern Cape and a depot in East London we are able to supply a National Service on short notice, with ease. We have a strong management team that are captained by Riaan.

## OUR CLIENTS



# CONTACT INFORMATION

## XTREME SCAFFOLDING PORT ELIZABETH

**041 484 6383**   **admin@scaf.co.za**

---

Riaan Van Jaarsveld	Managing Director	082 466 9940	riaan@scaf.co.za
Natasha Van Jaarsveld	Financial Director	082 926 2383	natasha@scaf.co.za
Willem Steyn	Operations Manager	076 926 5311	managerpe@scaf.co.za
Stephan LaCante	Operations Manager	082 222 4033	stephan@scaf.co.za
Brendon Honeyborne	B.D.M	066 290 9002	brendon@scaf.co.za
Piero Alting	Safety Officer	064 684 0255	safety@scaf.co.za

## EAST LONDON

---

Christo de Villiers	Depot Manager	064 906 6221	sites@scaf.co.za
---------------------	---------------	--------------	------------------

